

Saltwater Unitarian Universalist Church

Is a Welcoming Community
dedicated to

Practicing Love.

Fostering Connection.

Nurturing Spiritual Growth.

Acting for Justice.

We Are Welcome Here!

In all the beauty of languages,
cultures, and skin tones that come
together in our uniqueness,

In all the ways we experience and
express gender,

In the beauty that is who we love and
how we love,

With all the religious and ethical
traditions that inform our spiritual
life,

We come with an open mind,
a loving heart, and welcoming hands.

Our theme for the
Annual Giving Drive 2025-26 is:

We Are Welcome Here!

Events

February – March

Connection Dinners

You will have an opportunity to sign up for a
Connection Dinner.

These dinners will be hosted by members of
the congregation in their homes, at the
church, and on zoom.

The purpose of the dinners is to connect
with one another in a small group setting.
We will share a hearty meal, talk about our
welcoming experiences at Saltwater, and
get to know one another better.

More Information and Sign-up



OR Contact Judy at
judyfeatherstone@yahoo.com

March 16th Faith Formation Sunday Kick-off

April 6th – Potluck and Cake

After Service, we will join together to
celebrate a successful Annual Giving
Drive

We Are Welcome Here!



Saltwater Unitarian Universalist Church

25701 14th Place South
Des Moines, WA 98198
206-651-7358

Within our **Welcoming Community** we discover our strengths and share them with one another, and foster connections and relationships that are the foundation of Saltwater Church.

We hope that you will continue to give generously and joyfully through the Saltwater Annual Giving Drive to support our community in all of the wonderful ways that it provides connection, meaning, and change.

The Annual Giving Drive provides funds to help us collectively fulfill our mission by providing salaries, benefits, operations, and programming that allow our church to thrive.

Last year, we made a commitment to support our church through the rising cost of inflation and to hold ourselves accountable for providing a livable wage for our minister and staff. We saw the congregation respond in an amazing way!

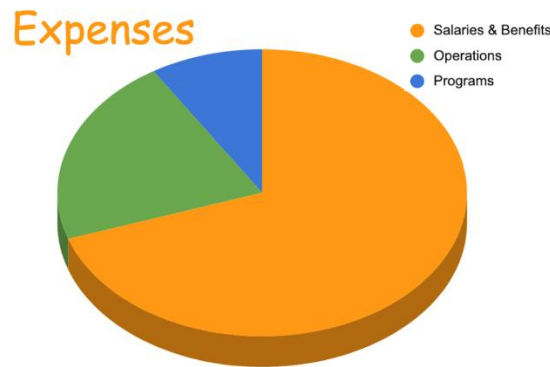
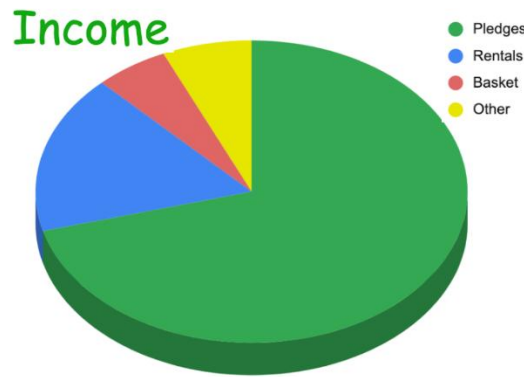
Let us continue to share generously in this coming year.

We Are ALL Welcome Here!

Thank you from your Annual Giving Drive Team

Income and Expenses based on 2023-24 data

Each spring, as members and friends of Saltwater Church, we make a promise of financial support (a pledge) for the coming fiscal year, which begins on July 1, 2025.



WE ARE WELCOME HERE!



Giving Guide

Please consider increasing your Saltwater pledge to a **Sustainer** or **Visionary** Level

Annual Income	Sustainer			Visionary		
	Suggested % of Income	Monthly	Annual	Suggested % of Income	Monthly	Annual
\$10k	3%	\$25	\$300	4%	\$33	\$400
\$20k	3%	\$50	600	4%	\$67	\$800
\$35k	3%	\$88	1,050	4%	\$117	\$1,400
\$50k	4%	\$167	2,000	5%	\$208	\$2,500
\$65k	4%	\$217	2,600	5%	\$271	\$3,250
\$80k	4.5%	\$300	3,600	6%	\$400	\$4,800
\$100k	5%	\$417	5,000	6.5%	\$542	\$6,500
\$150k	5.5%	\$688	8,250	7%	\$875	\$10,500
\$200k	6%	\$1,000	12,000	8%	\$1,333	\$16,000